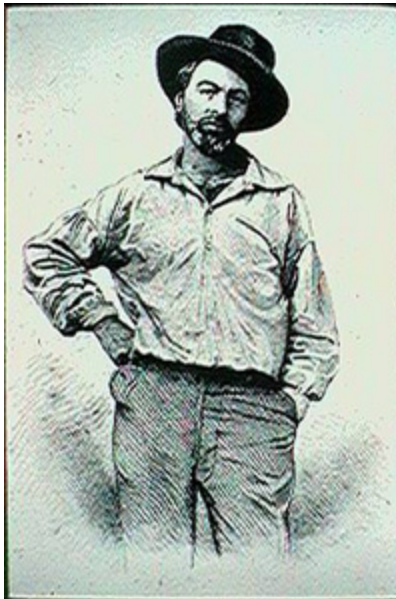


ONE'S-SELF I SING.

ONE'S-SELF I sing, a simple separate person,
Yet utter the word Democratic, the word En-Masse.

Of physiology from top to toe I sing,
Not physiognomy alone nor brain alone is worthy for the Muse,
I say the Form complete is worthier far,
The Female equally with the Male I sing.

Of Life immense in passion, pulse, and power,
Cheerful, for freest action form'd under the laws divine,
The Modern Man I sing.



From Leaves of Grass by Walt Whitman